

SONY®

# User guide

Stereo Bluetooth® Headset  
SBH24

# Contents

<b>Introduction.....</b>	<b>3</b>
Function overview.....	3
Hardware overview.....	3
<b>Basics.....</b>	<b>5</b>
Charging.....	5
Turning on and off.....	5
Adjusting the volume.....	6
Wearing instruction.....	6
<b>Getting started.....</b>	<b>8</b>
Pairing your headset with an Android or iOS device.....	8
Performing a factory reset on your headset.....	8
<b>Using your headset.....</b>	<b>9</b>
Using your headset for phone calls.....	9
Using your headset to play music.....	9
Using the Voice Assist function.....	9
Using Multipoint mode.....	10
<b>Legal information.....</b>	<b>11</b>
Declaration of Conformity for SBH24.....	12

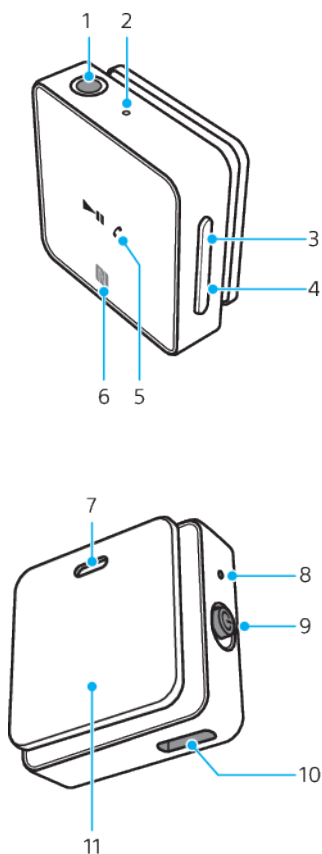
# Introduction

## Function overview

Your SBH24 Stereo Bluetooth® Headset is designed to make life more convenient when you're on the go. When paired with a compatible Android™ or iOS device, you can use your headset to:

- Answer or reject incoming calls.
- Control music played on a paired Android or iOS device.

## Hardware overview



1 Headphone jack Connect wired headphones to the 3.5 mm jack.

2 Microphone Make phone calls or activate Voice Assist.

3 Volume key + Press to increase volume.


4 Volume key - Press to decrease volume.

5 Multi-function key Short press to:

- Answer incoming calls or end an ongoing call.
- Play or pause the current track.

Long press for 1 second to:

- Reject incoming calls.
- Initiate Voice search with Assistant or Siri.

	<ul style="list-style-type: none"> <li>• Mute the microphone during a call.</li> </ul> <p>Long press for 7 seconds to:</p> <ul style="list-style-type: none"> <li>• Enter pairing mode.</li> </ul> <p>Quickly double-tap to:</p> <ul style="list-style-type: none"> <li>• Skip to the next music track.</li> </ul> <p>Quickly triple-tap to:</p> <ul style="list-style-type: none"> <li>• Return to the previous music track.</li> </ul>	
6	NFC detection area	Touch other devices to this area to use NFC.
7	Strap hole	Attach a strap to your headset as an alternative instead of using the clip.
8	LED indicator	<p>The LED colour indicates battery level:</p> <ul style="list-style-type: none"> <li>• Green: 85% or more.</li> <li>• Orange: 15% - 85%.</li> <li>• Red: 15% or less.</li> </ul> <p>The LED flash frequency indicates status:</p> <ul style="list-style-type: none"> <li>• Slow flashes when your headset is connected or idle, or during an active call.</li> <li>• Quick flashes when your headset is being paired with another device, or when a call is incoming.</li> </ul>
9	Power key 	<p>Slide up to power on.</p> <p>Slide down to power off.</p>
10	Charger/USB Type-C™ cable port	Insert the USB Type-C cable to charge the battery.
11	Clip	Clip your headset to your shirt.

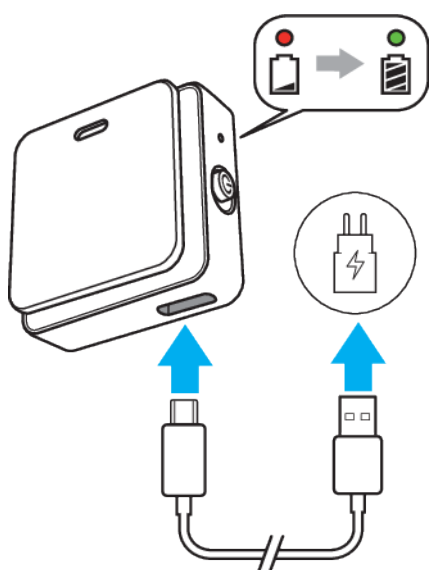
# Basics

## Charging

Before using your headset for the first time, it is recommended to charge it with an official Sony charger. The LED indicator turns green when the battery level is above 85%, and goes off when your headset is fully charged.

- ! A drained headset needs to charge for approximately 1.5 hours to be fully charged. Battery life while listening to music or handling calls is approximately 6 hours if the temperature is 25 °C (77 °F). Your headset has a capless USB port. The USB port must be completely dry before a cable can be connected for charging.



### To charge your headset



- 1 Connect the larger USB connector to the charger or the USB port of a computer.
  - 2 Connect the USB Type-C connector of the cable to your headset.
- 💡 For the recommended charger, see <http://www.sonymobile.com/products/accessories/>.

## Turning on and off

### To turn on your headset

- Slide  up. The LED indicator flashes quickly three times in green to indicate that your headset is powered on.
- ### To turn off your headset
- Slide  down. The LED indicator flashes quickly three times in red to indicate that your headset is powered off.
- 💡 If your headset is turned on but left idle, it remains in pairing mode for 10 minutes. After 30 minutes, if your headset is not paired to an Android or iOS device, it turns off automatically.

## Adjusting the volume

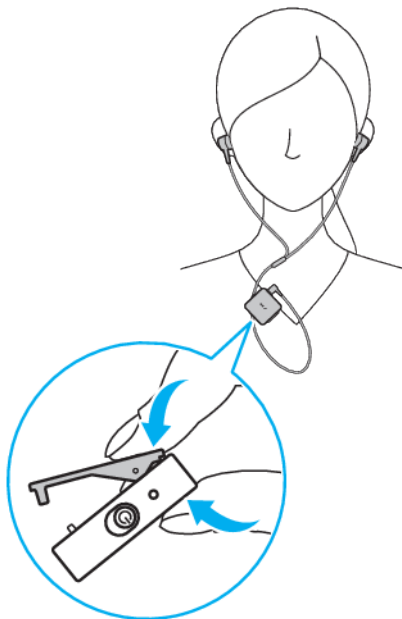
### To change the call or music volume

- During a call or when listening to music, press **+** or **-** to increase or decrease the volume.
- ! Avoid using your headphones on high volume, as this may cause permanent hearing damage or disturb others around you.

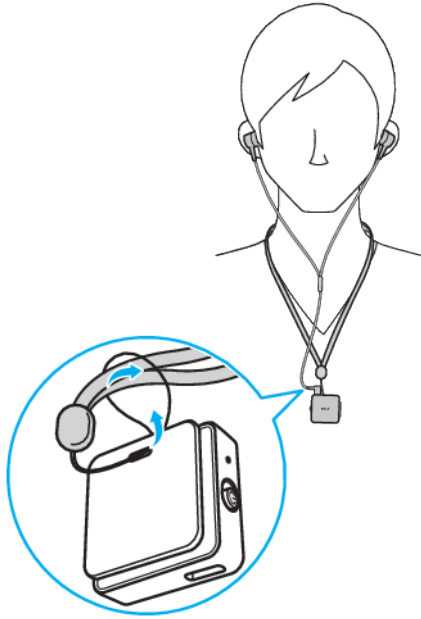
## Wearing instruction

You can wear your headset clipped to your shirt, or attach a strap and wear it around your neck. When wearing your headset, carry your Android or iOS device on the same side of your body to facilitate pairing.

- ! A set of wired headphones that supports the CTIA standard is included with your headset at purchase. You can use other headphones, but some may not work properly with your headset.



## To attach a strap to your headset



- Attach a strap through the strap hole on your headset, as shown in the illustration. Straps are sold separately.

# Getting started

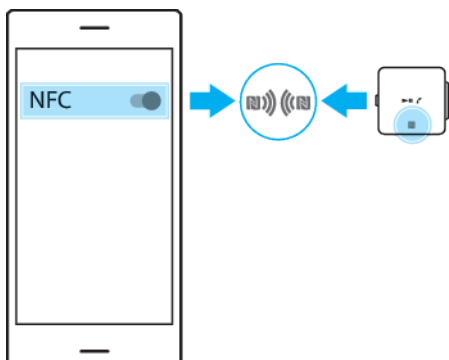
## Pairing your headset with an Android or iOS device

To pair your headset with an Android device, you can use either NFC or Bluetooth. To pair your headset with an iOS device, use Bluetooth.

After you pair your headset with an Android or iOS device, the information is saved. Your headset can save up to eight paired devices.

Whenever the most recently paired device is in range, your headset tries to reconnect automatically.

### To pair your headset with an Android device using NFC



- 1 Make sure that your headset is fully charged and turned on.
- 2 On the Android device, make sure that NFC is turned on and the screen is unlocked.
- 3 Touch the NFC area of your headset against the NFC detection area of the Android device.
- 4 Follow the on-screen instructions on the Android device to complete the pairing.

### To pair your headset with an Android or iOS device using Bluetooth

- 1 Make sure that your headset is fully charged and turned on.
- 2 On the Android or iOS device, make sure that Bluetooth is turned on.
- 3 Long press **▶||** **↶** for approximately 7 seconds.
- 4 Scan for available Bluetooth devices on the Android or iOS device, then select **SBH24**.

## Performing a factory reset on your headset

Perform a factory reset if your headset behaves unexpectedly. Factory reset restores your headset to its original settings.

### To perform a factory reset on your headset

- 1 Connect your headset to a power source.
- 2 Turn off your headset.
- 3 Long press **▶||** **↶** for approximately 5 seconds. The LED indicator will flash twice in orange.



# Using your headset

## Using your headset for phone calls

- ⚠ For your safety, do not use your headset to handle calls while you are driving. To prevent traffic accidents, it is not recommended to use headphones while walking, running or cycling.

For these functions to work, you must use an Android or iOS device that supports the relevant functions, for example, call handling.

- 💡 If you are using headphones that do not have a microphone, you can use your headset's microphone for calls instead.

### To answer a call

- When you hear an incoming call signal, short press ▶|| 🔄.

### To end a call

- During an ongoing call, short press ▶|| 🔄.

### To reject a call

- When you hear an incoming call signal, long press ▶|| 🔄 for 1 second.

### To answer a second call

- If you hear two beeps during an ongoing call, a second call is incoming. Short press ▶|| 🔄 to put the ongoing call on hold and answer the second call.

- 💡 You can switch between the two calls at any time by quickly double-tapping ▶|| 🔄.

### To reject a second call

- If you hear two beeps during an ongoing call, a second call is incoming. To reject the second call, long press ▶|| 🔄 for 1 second.

### To mute the microphone during a call

- Long press ▶|| 🔄 for 1 second. You will hear beeps. To unmute the microphone, long press ▶|| 🔄 for 1 second again until you hear beeps.

## Using your headset to play music

When your headset is connected to an Android or iOS device, you can play audio content such as music from the Android or iOS device using your headset. Open the relevant application on the Android or iOS device before you start listening to audio content.

### To pause or skip music tracks

- 1 When listening to music, short press ▶|| 🔄 to pause the track. Short press again to resume.
- 2 Quickly double-tap ▶|| 🔄 to skip to the next track.
- 3 Quickly triple-tap ▶|| 🔄 to go back to the previous track.

## Using the Voice Assist function

### To start the voice search and actions

- Long press ▶|| 🔄 for 1 second to talk to Google/Siri.


- ! For these functions to work, you must use an Android or iOS device that supports the relevant functions. Refer to instructions from the Android or iOS device for details.

## Using Multipoint mode


You can use Multipoint mode to pair your headset with either two Android or two iOS devices at the same time. When you use your headset to answer an incoming call, the devices remain connected to your headset after you end the call. Turn off Multipoint mode manually to switch back to Singlepoint mode.

- ! The Voice Assist feature is not available in Multipoint mode.
- 💡 When using Multipoint mode, you can listen to music from either of the connected devices. Simply stop the music on one device and start playing it on the other to switch.

### To turn on Multipoint mode

- 1 Turn off your headset.
  - 2 Slide  up and then press **+** at the same time until your headset is turned on. Your headset will beep twice and the LED indicator will flash slowly twice in orange.
  - 3 Pair the Android or iOS devices with your headset.
- 💡 See *Pairing your headset with an Android or iOS device* on page 8 for details on how to pair.

### To turn off Multipoint mode

- 1 Turn off your headset.
  - 2 Slide  up and then press **–** at the same time until your headset is turned on. Your headset will beep once and the LED indicator will flash once in orange.
- ! When you turn off Multipoint mode, the most recently paired device will remain paired.

# Legal information

## Sony SBH24

Prior to use, please read the *Important information* leaflet separately provided.

This User guide is published by Sony Mobile Communications Inc. or its local affiliated company, without any warranty. Improvements and changes to this User guide necessitated by typographical errors, inaccuracies of current information, or improvements to programs and/or equipment, may be made by Sony Mobile Communications Inc. at any time and without notice. Such changes will, however, be incorporated into new editions of this User guide.

All rights reserved.

©2017 Sony Mobile Communications Inc.

4-12-3 Higashi-Shinagawa, Shinagawa-ku, Tokyo, 140-0002 Japan

Sony Belgium, bijkantoor van Sony Europe Limited, Da Vincilaan 7-D1, 1935 Zaventem, Belgium

Sony is the trademark or registered trademark of Sony Corporation.

All product and company names mentioned herein are the trademarks or registered trademarks of their respective owners. Any rights not expressly granted herein are reserved. All other trademarks are property of their respective owners.

Visit [www.sonymobile.com](http://www.sonymobile.com) for more information.

All illustrations are for illustration only and may not accurately depict the actual accessory.

## Declaration of Conformity for SBH24



Hereby, Sony Mobile declares that the equipment type **RD-0011** is in compliance with Directive: **2014/53/EU**. The full text of the EU declaration of conformity is available at the following internet address: <http://www.compliance.sony.de/>

С настоящото Sony Mobile декларира, че радиосъоръжение тип **RD-0011** е в съответствие с Директива; **2014/53/ЕС**. Цялостният текст на ЕС декларацията за съответствие може да се намери на следния интернет адрес: <http://www.compliance.sony.de/>

Sony Mobile ovime izjavljuje da je radijska oprema tipa **RD-0011** u skladu s Direktivom; **2014/53/EU**. Cjeloviti tekst EU izjave o sukladnosti dostupan je na sljedećoj internetskoj adresi: <http://www.compliance.sony.de/>

Sony Mobile tímto prohlašuje, že radiové zařizení typ **RD-0011** je v souladu se směrnicí; **2014/53/EU**. Úplné znění EU prohlášení o shodě je k dispozici na této internetové adrese: <http://www.compliance.sony.de/>

Hermed erklarer Sony Mobile, at radioudstyrstypen **RD-0011** er i overensstemmelse med direktiv; **2014/53/EU**. EU-overensstemmelseserklaringens fulde tekst kan findes på følgende internetadresse: <http://www.compliance.sony.de/>

Hierbij verklaart Sony Mobile dat het type radioapparatuur **RD-0011** conform is met Richtlijn; **2014/53/EU**. De volledige tekst van de EU-conformiteitsverklaring kan worden geraadpleegd op het volgende internetadres: <http://www.compliance.sony.de/>

Käesolevaga deklareerib Sony Mobile, et käesolev raadioseadme tüüp **RD-0011** vastab direktiivi; **2014/53/EL** nouetele. ELi vastavusdeklaratsiooni täielik tekst on kättesaadav järgmisel internetiaadressil: <http://www.compliance.sony.de/>

Sony Mobile vakuuttaa, että radiolaitetyypin **RD-0011** on direktiivin; **2014/53/EU** mukainen. EU-vaatimustenmukaisuusvakuutuksen täysimittainen teksti on saatavilla seuraavassa internetosoitteessa: <http://www.compliance.sony.de/>

Le soussigné, Sony Mobile, déclare que l'équipement radioélectrique du type **RD-0011** est conforme à la directive; **2014/53/UE**. Le texte complet de la déclaration UE de conformité est disponible à l'adresse internet suivante: <http://www.compliance.sony.de/>

Hiermit erklärt Sony Mobile, dass der Funkanlagentyp **RD-0011** der Richtlinie; **2014/53/EU** entspricht. Der vollständige Text der EU-Konformitätserklärung ist unter der folgenden Internetadresse verfügbar: <http://www.compliance.sony.de/>

Με την παρούσα η Sony Mobile, δηλώνει ότι ο ραδιοεξοπλισμός **RD-0011** πληροί τους όρους της οδηγίας; **2014/53/ΕΕ**. Το πλήρες κείμενο της δήλωσης συμμόρφωσης ΕΕ διατίθεται στην ακόλουθη ιστοσελίδα στο διαδίκτυο: <http://www.compliance.sony.de/>

Sony Mobile igazolja, hogy a **RD-0011** típusú rádióberendezés megfelel a; **2014/53/EU** irányelvnek. Az EU-megfelelőségi nyilatkozat teljes szövege elérhető a következő internetes címen: <http://www.compliance.sony.de/>

Il fabbricante, Sony Mobile, dichiara che il tipo di apparecchiatura radio **RD-0011** e conforme alla direttiva; **2014/53/EU**. Il testo completo della dichiarazione di conformità UE e disponibile al seguente indirizzo Internet: <http://www.compliance.sony.de/>

Ar šo Sony Mobile deklarē, ka radioiekārta **RD-0011** atbilst Direktīvai; **2014/53/ES**. Pilns ES atbilstības deklarācijas teksts ir pieejams šādā interneta vietnē: <http://www.compliance.sony.de/>

Mes, Sony Mobile, patvirtiname, kad radijo įrenginių tipas **RD-0011** atitinka Direktyvą; **2014/53/ES**. Visas ES atitikties deklaracijos tekstas prieinamas šiuo interneto adresu: <http://www.compliance.sony.de/>

Il-Kumpanija Sony Mobile tiddikjara li t-tagħmir tar-radju tat tip **RD-0011** huwa konformi mad-Direttiva; **2014/53/EU**. It-test sħiħ tad-dikjarazzjoni ta' konformita tal-UE huwa disponibbli f'dan l-indirizz tal-Internet li ġej: <http://www.compliance.sony.de/>

Herved erklarer Sony Mobile at radioutstyr typen **RD-0011** er i samsvar med direktiv; **2014/53/EU**. EU-erklaring fulltekst finner du pa Internett under: <http://www.compliance.sony.de/>

Sony Mobile niniejszym oświadcza, że typ urządzenia radiowego **RD-0011** jest zgodny z dyrektywą; **2014/53/UE**. Pełny tekst deklaracji zgodności UE jest dostępny pod następującym adresem internetowym: <http://www.compliance.sony.de/>

O(a) abaixo assinado(a) Sony Mobile declara que o presente tipo de equipamento de rádio **RD-0011** está em conformidade com a Diretiva; **2014/53/UE**. O texto integral da declaração de conformidade está disponível no seguinte endereço de Internet: <http://www.compliance.sony.de/>

Prin prezenta, Sony Mobile declară că tipul de echipament radio **RD-0011** este în conformitate cu Directiva; **2014/53/UE**. Textul integral al declarației UE de conformitate este disponibil la următoarea adresă internet: <http://www.compliance.sony.de/>

Sony Mobile potrjuje, da je tip radijske opreme **RD-0011** skladen z Direktivo; **2014/53/EU**. Celotno besedilo izjave EU o skladnosti je na voljo na naslednjem spletnem naslovu: <http://www.compliance.sony.de/>

Sony Mobile týmto vyhlasuje, že rádiové zariadenie typu **RD-0011** je v súlade so smernicou; **2014/53/EU**. Úplné EÚ vyhlásenie o zhode je k dispozícii na tejto internetovej adrese: <http://www.compliance.sony.de/>

Por la presente, Sony Mobile declara que el tipo de equipo radioeléctrico **RD-0011** es conforme con la Directiva; **2014/53/UE**. El texto completo de la declaración UE de conformidad está disponible en la dirección Internet siguiente: <http://www.compliance.sony.de/>

Härmed försäkrar Sony Mobile att denna typ av radioutrustning **RD-0011** överensstämmer med direktiv; **2014/53/EU**. Den fullständiga texten till EU-försäkran om överensstämmelse finns på följande webbadress: <http://www.compliance.sony.de/>

Bu belgeyle, Sony Mobile Communications Inc., **RD-0011** tipi telsiz cihazının **2014/53/EU** sayılı Direktife uygun olduğunu beyan etmektedir. AB Uygunluk beyanının tüm metnine şu internet adresinden ulaşılabilir: <http://www.compliance.sony.de/>

## FCC Statement

This device complies with Part 15 of the FCC rules. Operation is subject to the following two conditions: (1) This device may not cause harmful interference, and (2) This device must accept any interference received, including interference that may cause undesired operation.

Any change or modification not expressly approved by Sony may void the user's authority to operate the equipment.

This equipment has been tested and found to comply with the limits for a Class B digital device, pursuant to Part 15 of the FCC Rules. These limits are designed to provide reasonable protection against harmful interference in a residential installation. This equipment generates, uses and can radiate radio frequency energy and, if not installed and used in accordance with the instructions, may cause harmful interference to radio communications. However, there is no guarantee that interference will not occur in a particular installation.

If this equipment does cause harmful interference to radio or television reception, which can be determined by turning the equipment off and on, the user is encouraged to try to correct the interference by one or more of the following measures:

- Reorient or relocate the receiving antenna.
- Increase the separation between the equipment and receiver.
- Connect the equipment into an outlet on a circuit different from that to which the receiver is connected.
- Consult the dealer or an experienced radio/TV technician for help.

## **Industry Canada Statement**

This device complies with Industry Canada's licence-exempt RSSs. Operation is subject to the following two conditions: (1) This device may not cause interference; and (2) This device must accept any interference, including interference that may cause undesired operation of the device.

## **Avis d'industrie Canada**

Le présent appareil est conforme aux CNR d'Industrie Canada applicables aux appareils radio exempts de licence. L'exploitation est autorisée aux deux conditions suivantes: (1) l'appareil ne doit pas produire de brouillage; (2) l'utilisateur de l'appareil doit accepter tout brouillage radioélectrique subi, même si le brouillage est susceptible d'en compromettre le fonctionnement.