

**SONY**<sup>®</sup>

# Transfer contacts using a Google account

August 2013



# Table of contents

<b>Why use a Google account? .....</b>	<b>2</b>
<b>Transferring contacts from an Android phone to your new Xperia™ device .....</b>	<b>3</b>
How it works .....	3
What you need .....	4
How to do it .....	5
<b>Transferring contacts using PC Companion and your Google account .....</b>	<b>9</b>
How it works .....	9
What you need .....	10
How to do it .....	11

## Trademarks and acknowledgements

---

All product and company names mentioned herein are the trademarks or registered trademarks of their respective owners. Any rights not expressly granted herein are reserved. All other trademarks are property of their respective owners.

# Why use a Google account?

There are two ways to use a Google account to transfer contacts from an old phone to your new Xperia™ device from Sony:

- If your old phone is an Android phone, you can sync the contacts on the old phone to your Google account and then sync the Google account with your new Xperia™ device. See [“Transferring contacts from an Android phone to your new Xperia™ device”](#) on page 2
- If your old phone not an Android phone, you can use the PC Companion application on a computer to upload the contacts from your old phone and then synchronise them with your Google account and your new Xperia™ device. See [“Transferring contacts using PC Companion and your Google account”](#) on page 9

A Google account lets you organise and access your contacts from any computer or mobile device. After successfully uploading your contacts to your Google account you can access your contacts from your Xperia™ device, your computer via <http://www.google.com/contacts>, and from any device or service using the same Google account. The data in the Google account is saved securely online. Also, any changes made to a contact from any device connected to your Google account will be synced to the account and reflected on all other units.

Having a Google account is key to using a range of applications and services with your Android phone. You need a Google account, for example, to use the Gmail application in your phone, to chat with friends using Google Hangout, to synchronise your phone calendar with your Google Calendar, and to download applications and games, music, movies and books from Google Play.

If you have not yet set up a Google account, you can do so by selecting **Settings > Account & Sync > Add account > Google** on your Xperia™ device. You can also register online at <http://accounts.google.com/SignUp>.

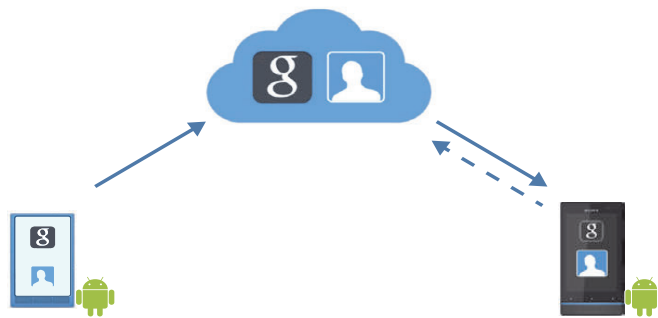
# Transferring contacts from an Android phone to your new Xperia™ device

This guide shows you how to transfer contacts from your old Android phone to your new Xperia™ device from Sony using a Google account.

If your old phone is not an Android phone, see [“Transferring contacts using PC Companion and your Google account”](#) on page 9

## How it works

---



You will use the same Google account on both your devices to transfer the contacts to your Xperia™ device. Below is a general overview of the process:

1. Set up the Google account on your old phone.
2. Copy all your contacts on the old phone first to your memory card and then to your Google account.
3. From your old phone, synchronise the Google account so that all contacts on the old phone get uploaded to your Google account online.
4. From your new Xperia™ device, log in to the same Google account as on your old phone and sync the account so that the latest contact information gets downloaded to your device.

# What you need

---

You need the following to transfer your contacts to your Google account:

- An old phone with Android 2.1 or later with a Google account set up.
- An Internet connection on both phones.

# How to do it

---

## On old phone:

*Note!* You need a Google account set up on old phone to do this step. The procedure described below to export the contacts to your memory card depends on the brand and model of your old phone. Below are general instructions only. Refer to the manual for your old phone for more specific instructions.

1. Make sure you have set up a Google account and that you can log in to it.
2. Go to **Phone book** application. This application may also be called **Contacts**, **People**, **Address book**, or something similar on your old phone.
3. Select all contacts. This is usually done by selecting **Select all** in the menu.
4. Select to export the contacts to the memory card in the menu.
5. Select to restore the contacts. Depending on the phone, this option might be referred to as **Restore**, **Import contacts** or something similar.
6. Select your Google account as the destination for the backup.
7. Synchronise the Google account. If necessary, refer to the manual for the old phone for more details on how to do this on your phone.

## On new Xperia™ device:

If you have already set up your existing Google account on your new Xperia device, go straight to step 15 below. If you do not have your Google account set up on your new Xperia device, continue on directly from here.

The procedure for setting up a Google account for synchronisation might vary depending on the model of the Xperia™ device. See the manual for the new device for more specific information on how this is done on your phone.

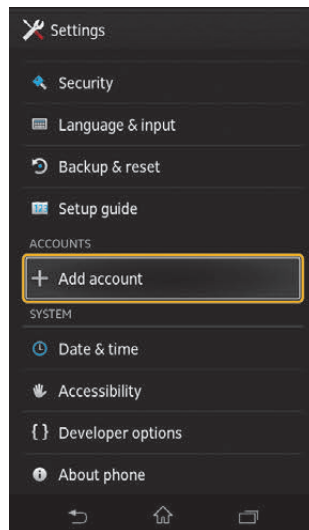
8. Tap 



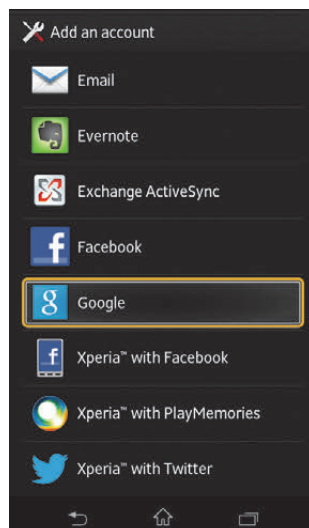
9. Tap **Settings**.



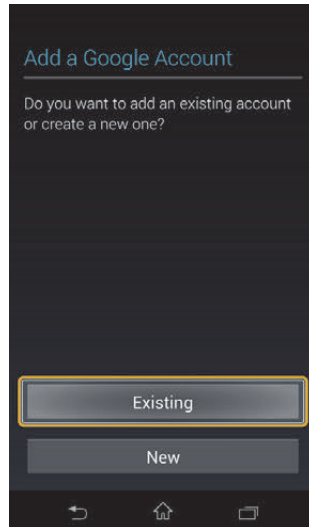
10. Tap **Add account**.



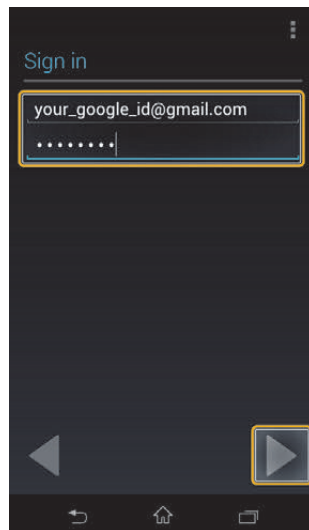
11. Tap **Google**.



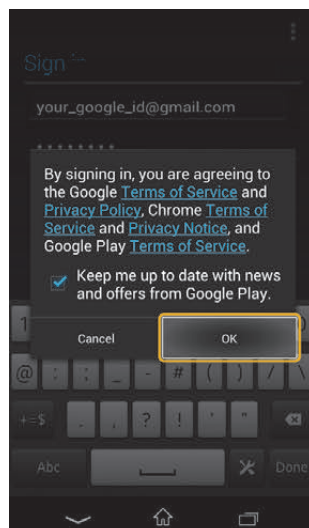
12. Tap **Existing**.



13. Sign in using the Google account you used on your old phone.

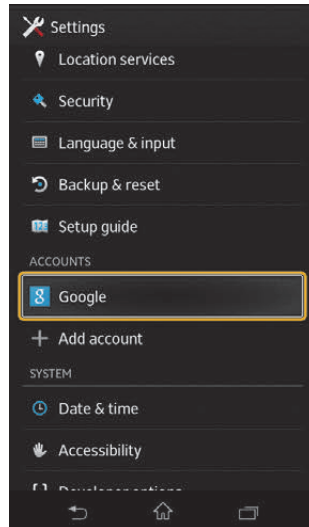


14. Tap **OK** to accept terms of service for the Google account.

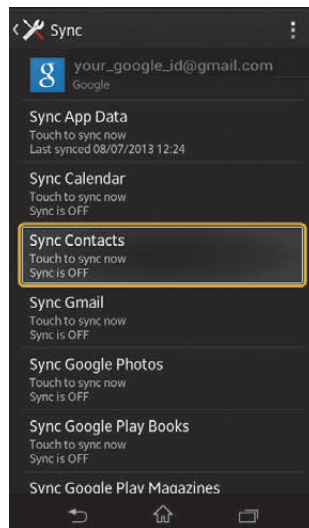




15. Under **Settings** > **Accounts**, tap **Google**.



16. Tap **Sync Contacts**.



All your Google contacts, including those that you synced from your old phone, are now available in the **Contacts** application on your Xperia™ device.

*Note!* If this method did not work, try using the method described in [“Transferring contacts from an Android phone to your new Xperia™ device”](#) on page 3.



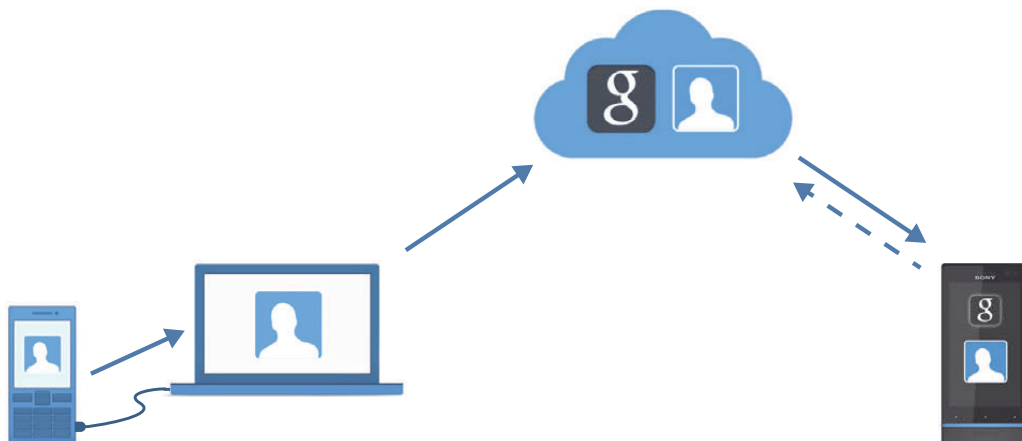
# Transferring contacts using PC Companion and your Google account

This guide shows you how to transfer contacts in your old phone without Android to your new Xperia™ device using the PC Companion application and a Google account.

If your old phone is an Android phone, please see [“Transferring contacts from an Android phone to your new Xperia™ device”](#) on page 3

## How it works

---



PC Companion is a PC application that helps you upload the contacts in your old mobile phone to your new Xperia™ device. Below is a general overview of the process:

1. Copy all your contacts on the old phone to your memory card.
2. Upload the contacts from the memory card on your old phone to your Google account using the PC Companion application.
3. From your new Xperia™ device, log in to your Google account and sync the account so that the latest contact information gets downloaded to your device.

For more information about Google accounts, see [“Why use a Google account?”](#) on page 2

# What you need

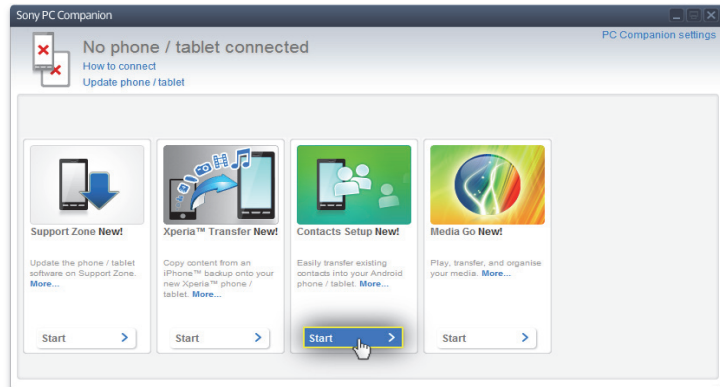
---

You need the following to transfer your contacts to your new device from Sony using PC Companion:

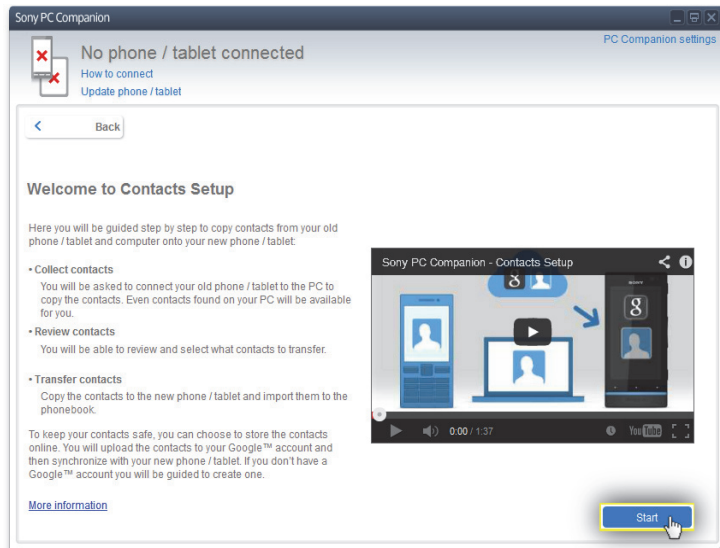
- A PC with PC Companion installed - see <http://www.sonymobile.com/global-en/tools/pc-companion>.
- A USB cable for your old phone.
- A Google account.
- An Internet connection.

# How to do it

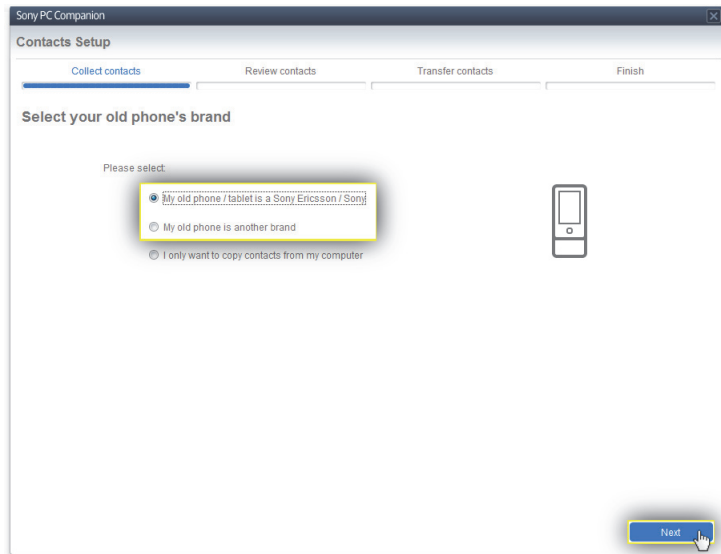
1. Connect your old phone to the computer.
2. **Computer:** Start PC Companion application. If this is your first time starting the application, select **Skip** on the first screen.
3. Select **Contact Setup** > **Start**.



4. Select **Start**.

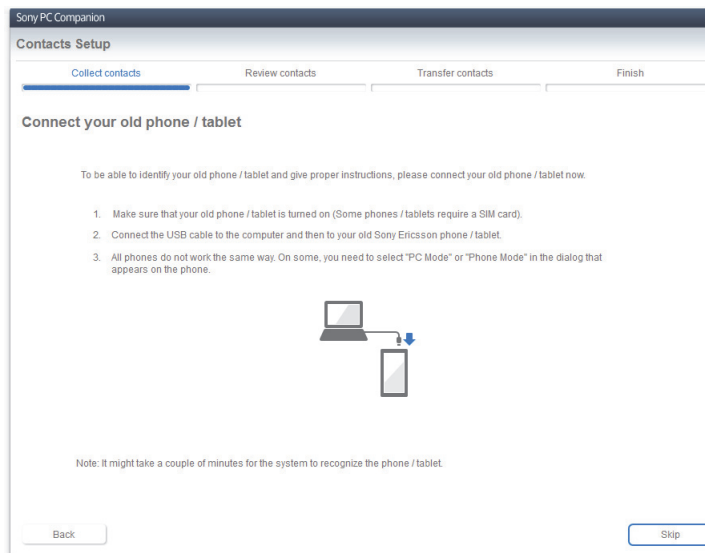


5. Select the brand of the old phone.
6. Select **Next**.



7. **For Sony Ericsson/Sony phones:**

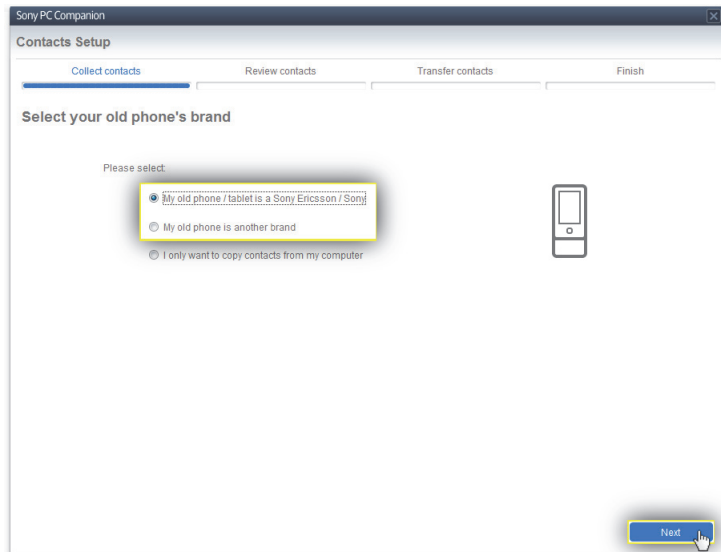
Connect your old phone to the computer then follow the instructions on the screen



## 7 For other phones:

This step varies depending on phone type. Refer to the manual for the phone for more details. Below are general instructions on how to save contacts to a memory card:

- a) Disconnect the old phone from the computer.
- b) **Old phone:** Open the **Phone book** application. This may also be called **Contacts**, **Address book**, **People** or something similar.
- c) Select all contacts.
- d) Select the relevant menu option to export the contacts to the memory card.
- e) Connect the old phone to the computer.
- f) **Computer:** Select **Next** in the PC Companion application.

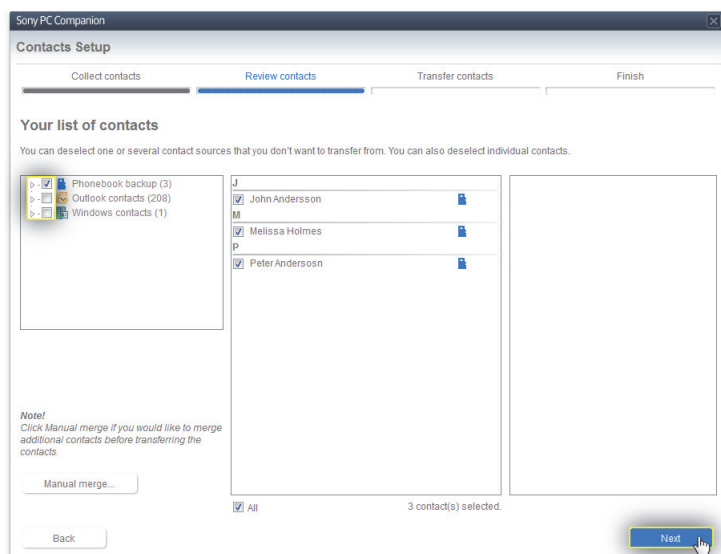


### All phones:

A list appears on the left hand side shows all contacts saved on the old phone and the computer.

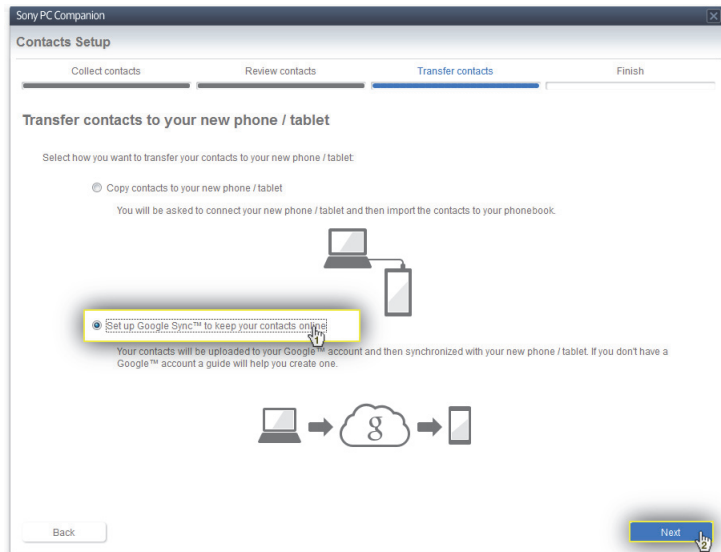
8. Check **Phone contacts** in the left window.
9. Uncheck all other groups of contacts (if any).
10. Select **Next** to import all contacts.

*Tip:* You can uncheck any contact in the list on the middle window to skip transferring it to your Xperia™ device.



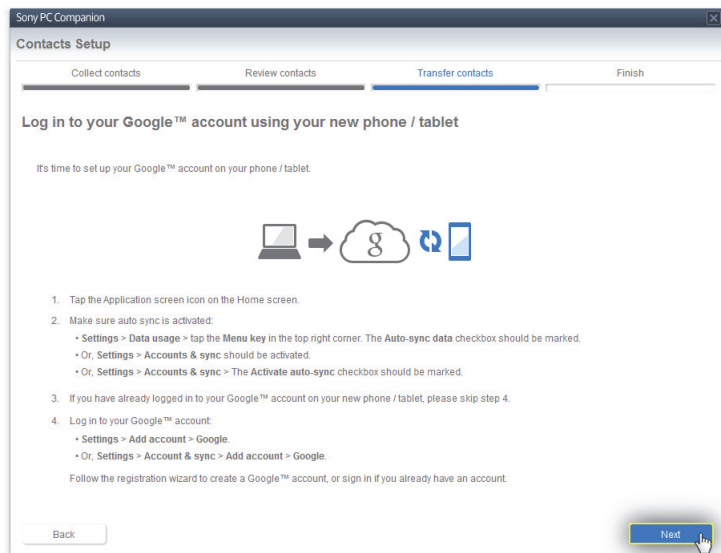
11. Select **Set up Google Sync to keep your contacts online.**

12. Select **Next.**



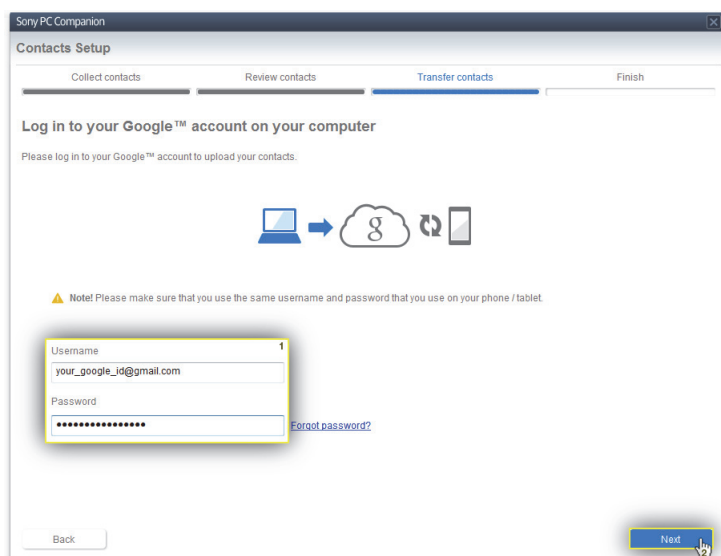
13. Select **Next.**

Note: Ignore the instructions on the screen. These steps will be covered later in this guide.



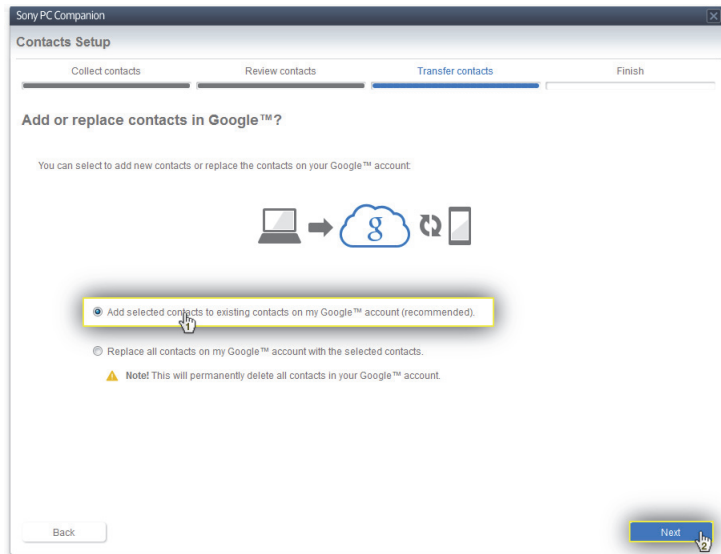
14. Enter the username and password for the Google account that you used on your old phone.

15. Select **Next.**

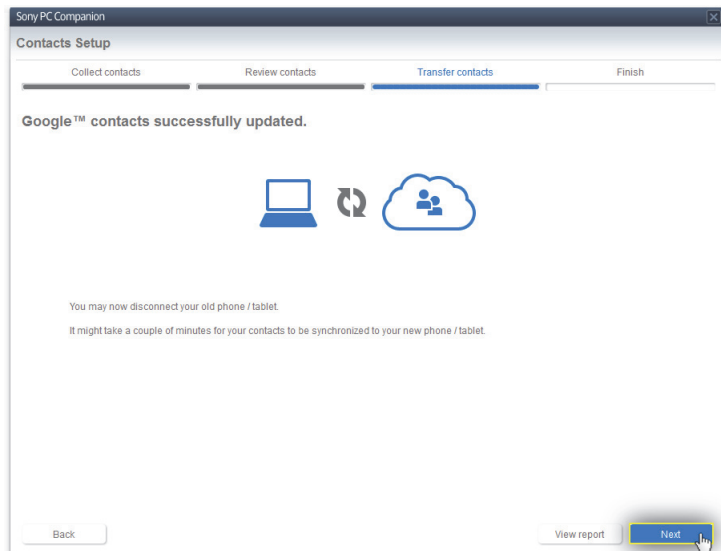


16. Select **Add selected contacts to existing contacts on my Google account (recommended)**.

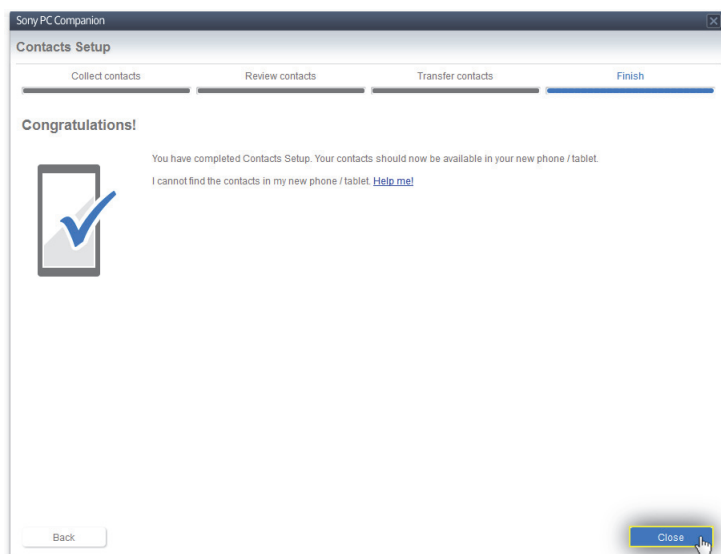
17. Select **Next**.



18. Select **Next**.



19. Select **Close**.






**On new Xperia™ device:**

If you have already set up your existing Google account on your new Xperia device, go straight to step 27 below. If you do not have your Google account set up on your new Xperia device, continue on directly from here.

The procedure for setting up a Google account for synchronisation might vary depending on the model of the Xperia™ device. See the manual for the new device for more specific information on how this is done on your phone.

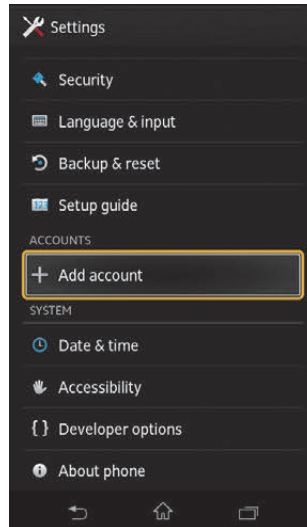
20. From the home screen, tap 



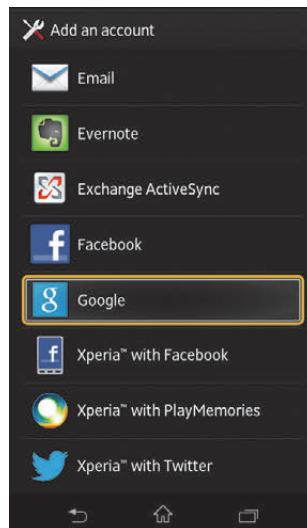
21. Tap **Settings**.



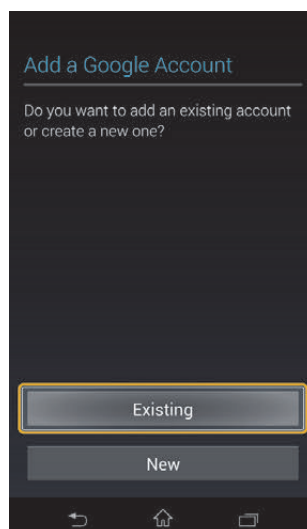
22. Tap **Add account**.



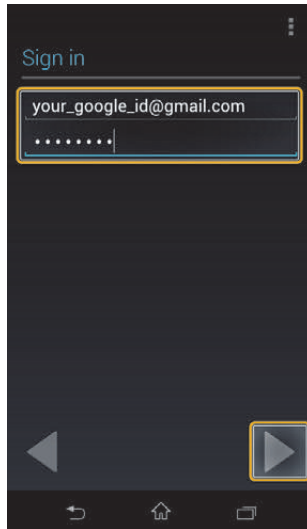
23. Tap **Google**.



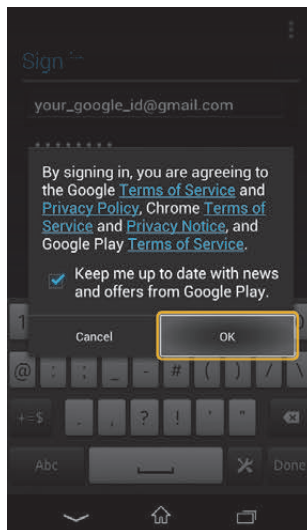
24. Tap **Existing**.



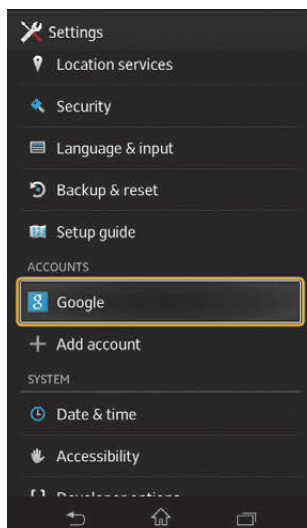
25. Sign in using the Google account you used on your old phone.



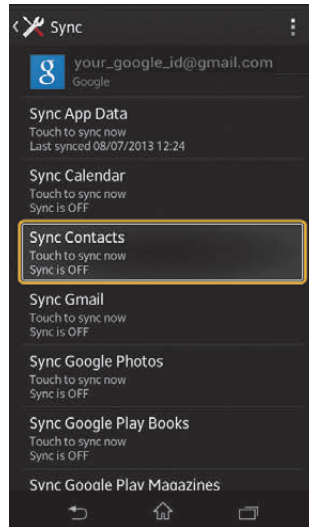
26. Tap **OK** to accept terms of service for the Google account.



27. Under **Settings > Accounts**, tap **Google**



28. Tap **Sync Contacts**.



All your Google contacts, including those that you synced from your old phone, are now available in the **Contacts** application on your Xperia™ device.



**Did this guide help you?**   
Please give us feedback