

Transfer contacts using PC Companion

August 2013



Table of contents

Introduction	2
Why use Google account?	2
Transferring contacts using PC Companion and your Google account	3
How it works	3
What you need	4
How to do it	5
Transferring contacts using PC Companion without using a Google account ..	14
How it works	14
What you need	14
How to do it	15

Trademarks and acknowledgements

All product and company names mentioned herein are the trademarks or registered trademarks of their respective owners. Any rights not expressly granted herein are reserved. All other trademarks are property of their respective owners.

Visit www.sonymobile.com for more information.

Introduction

There are two ways to use the PC Companion application to transfer contacts from an old phone to your new Xperia™ device from Sony:

- Sync the contacts on the old phone to your Google account and then sync the Google account with your new Xperia™ device. See [“Transferring contacts using PC Companion and your Google account”](#) on page 3
- Export the contacts from your old phone using the PC Companion application on a computer and then import them into your new Xperia™ device. See [“Transferring contacts using PC Companion without using a Google account”](#) on page 9

Why use Google account?

A Google account lets you organise and access your contacts from any computer or mobile device. After successfully uploading your contacts to your Google account you can access your contacts from your Xperia™ device, your computer via <http://www.google.com/contacts>, and from any device or service using the same Google account. The data in the Google account is saved securely online. Also, any changes made to a contact from any device connected to your Google account will be synced to the account and reflected on all other units.

Having a Google account is key to using a range of applications and services with your Android phone. You need a Google account, for example, to use the Gmail application in your phone, to chat with friends using Google Hangout, to synchronise your phone calendar with your Google Calendar, and to download applications and games, music, movies and books from Google Play.

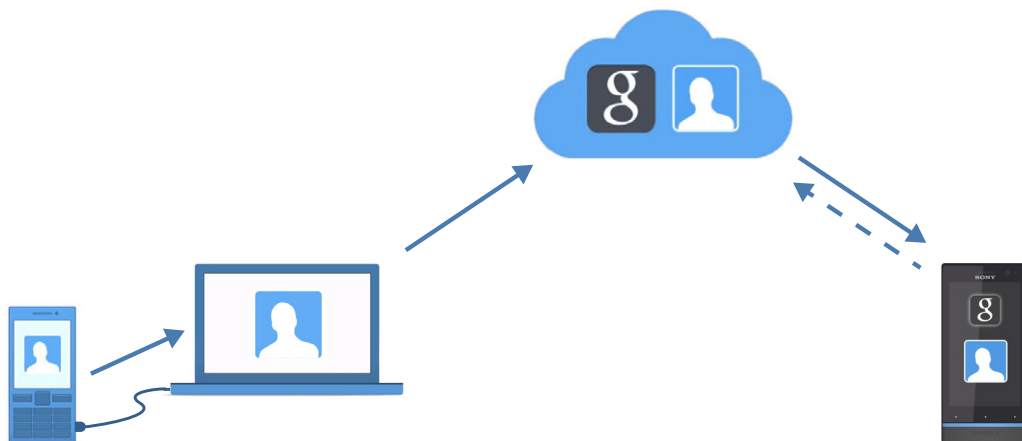
If you have not yet set up a Google account, you can do so by selecting **Settings > Account & Sync > Add account > Google** on your Xperia™ device. You can also register online at <http://accounts.google.com/SignUp>.

Transferring contacts using PC Companion and your Google account

This guide shows you how to transfer contacts in your old phone without Android to your new Xperia™ device using PC Companion and a Google account.

If you wish to transfer contacts without using a Google account, please see [“Transferring contacts using PC Companion without using a Google account”](#) on page 3

How it works



PC Companion is a PC application that helps you upload the contacts in your old mobile phone to your new Xperia™ device. Below is a general overview of the process:

1. Export all your contacts on the old phone to your memory card.
2. Upload the contacts from the memory card on your old phone to your Google account using the PC Companion application.
3. From your new Xperia™ device, log in to your Google account and sync the account so that the latest contact information gets downloaded to your device.

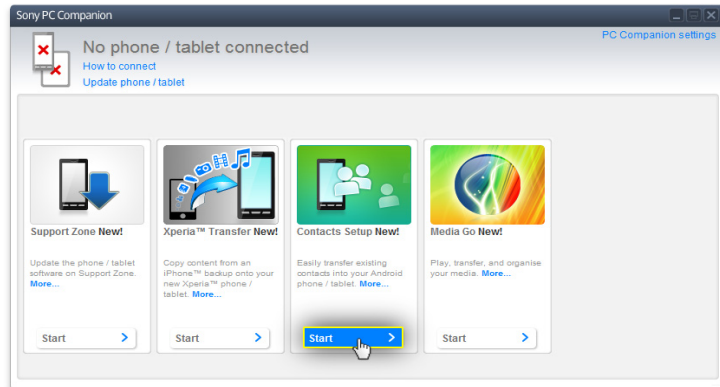
What you need

You need the following to transfer your contacts to your new Xperia™ device using PC Companion and a Google account:

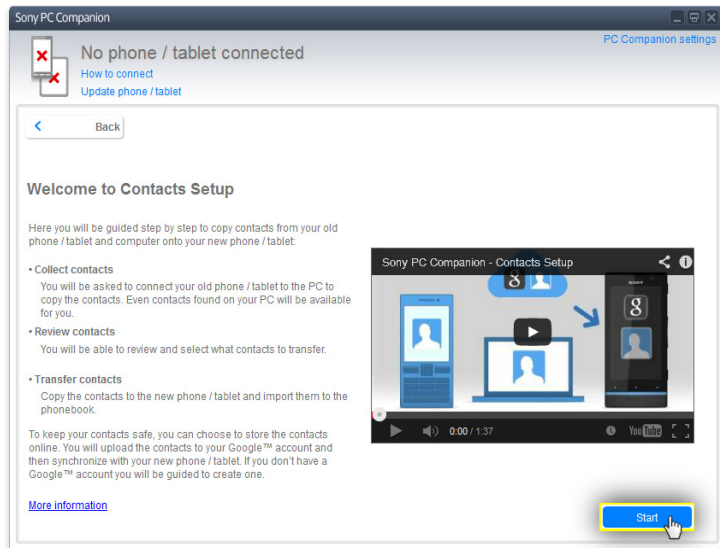
- A PC with PC Companion installed - see <http://www.sonymobile.com/global-en/tools/pc-companion>
- An USB cable for your old phone
- A Google account
- An Internet connection

How to do it

1. Connect your old phone to the computer.
2. **Computer:** Start PC Companion application. If this is your first time starting the application, select **Skip** on the first screen.
3. Select **Contact Setup** > **Start**.

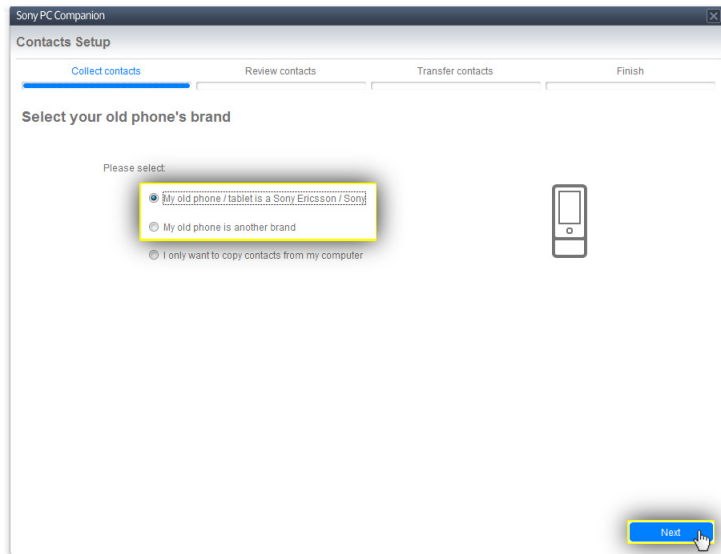


4. Select **Start**.



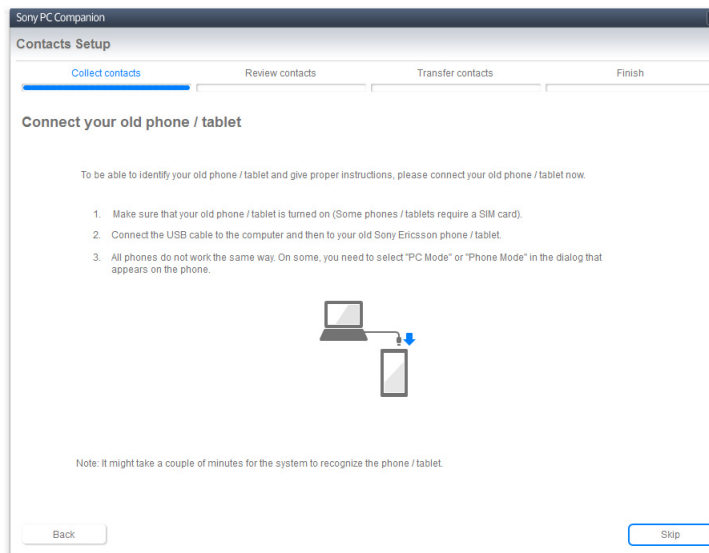
5. Select the brand of the old phone.

6. Select **Next**.



7. **For Sony Ericsson/Sony phones:**

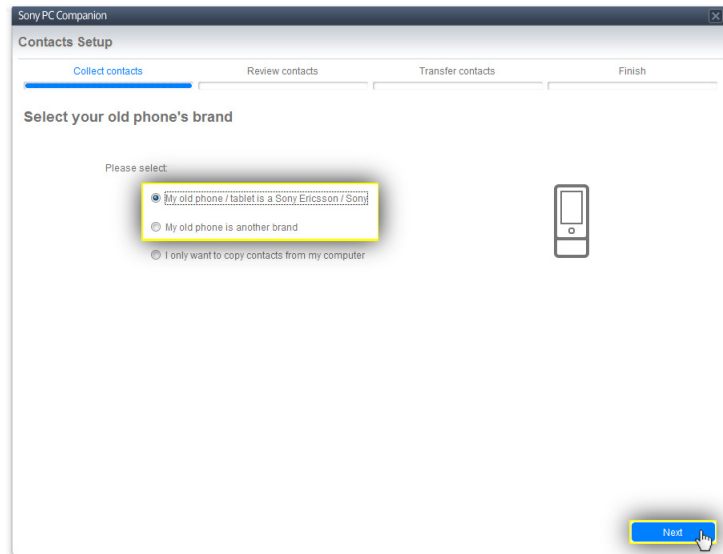
Connect your old phone to the computer then follow the instructions on the screen



7 For other phones:

This step varies depending on phone type. Refer to the manual for the phone for more details. Below are general instructions on how to save contacts to a memory card:

- a) Disconnect the old phone from the computer.
- b) **Old phone:** Open the **Phone book** application. This may also be called **Contacts**, **Address book**, **People** or something similar.
- c) Select all contacts.
- d) Select the relevant menu option to export the contacts to the memory card.
- e) Connect the old phone to the computer.
- f) **Computer:** Select **Next** in the PC Companion application.

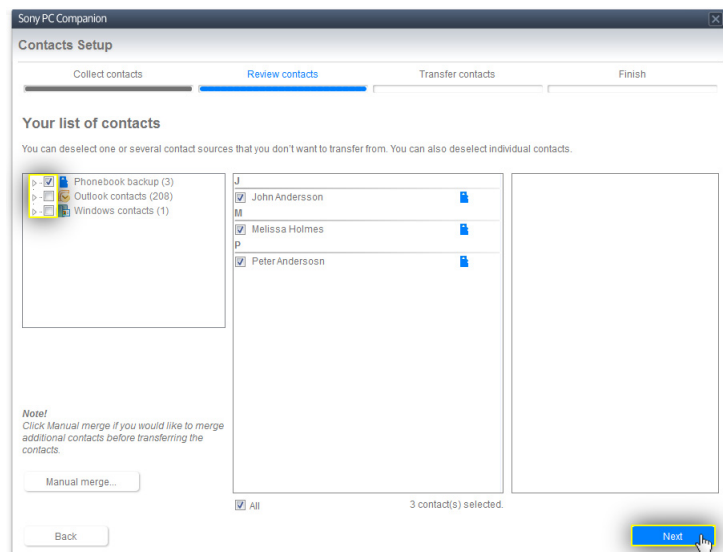


All phones:

A list appears on the left hand side showing all contacts saved on the old phone and the computer.

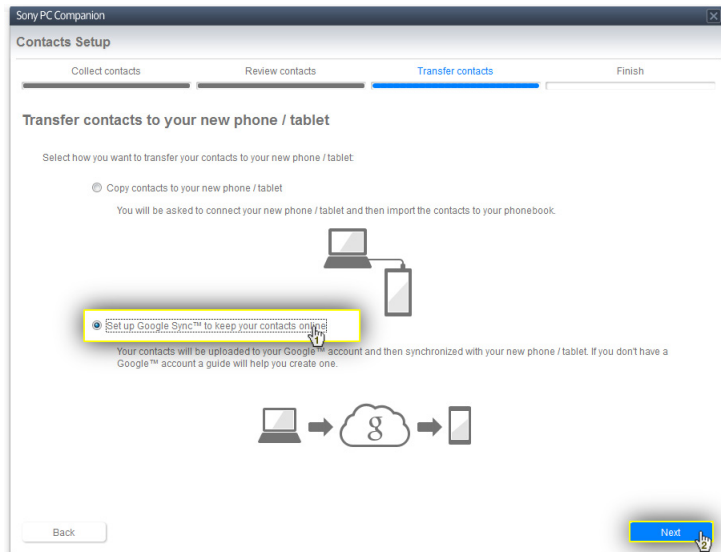
8. Check **Phone contacts** in the left window.
9. Uncheck all other groups of contacts (if any).
10. Select **Next** to import all contacts.

Tip: You can uncheck any contact in the list on the middle window to skip transferring it to your Xperia™ device.



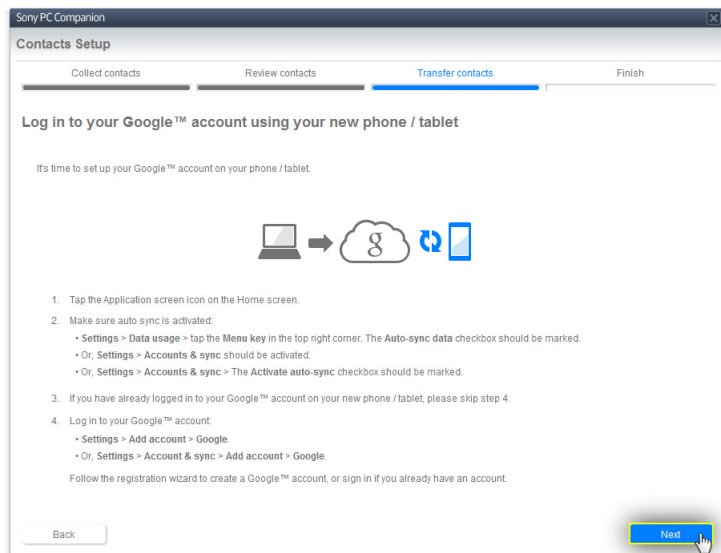
11. Select **Set up Google Sync to keep your contacts online.**

12. Select **Next.**



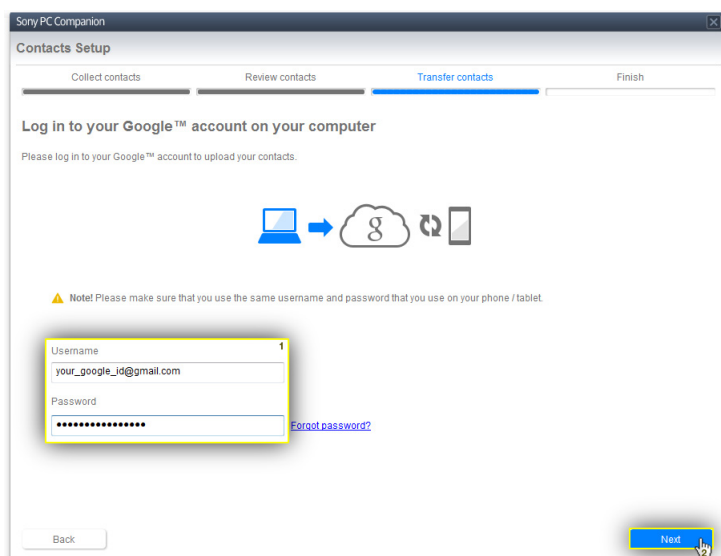
13. Select **Next.**

Note: Ignore the instructions on the screen. These steps will be covered later in this guide.



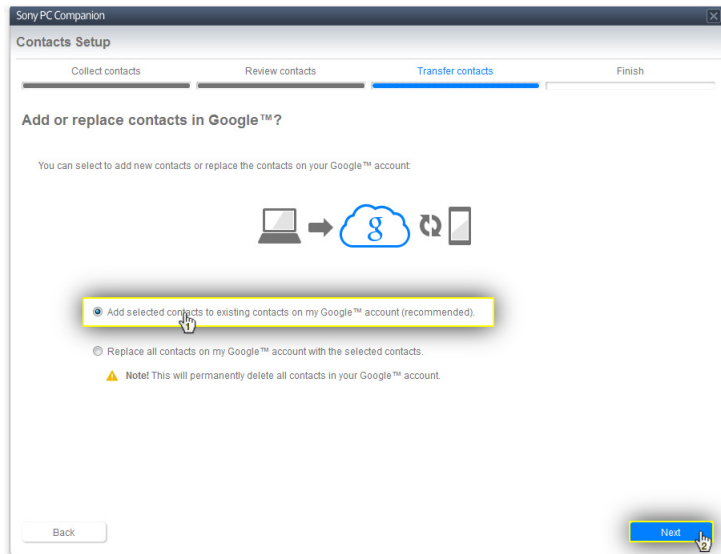
14. Enter the username and password for the Google account that you used on your old phone.

15. Select **Next.**

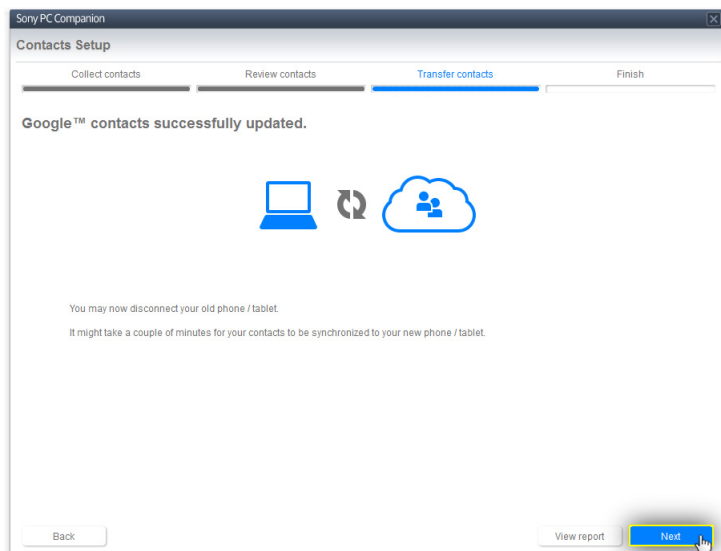


16. Select **Add selected contacts to existing contacts on my Google account (recommended)**.

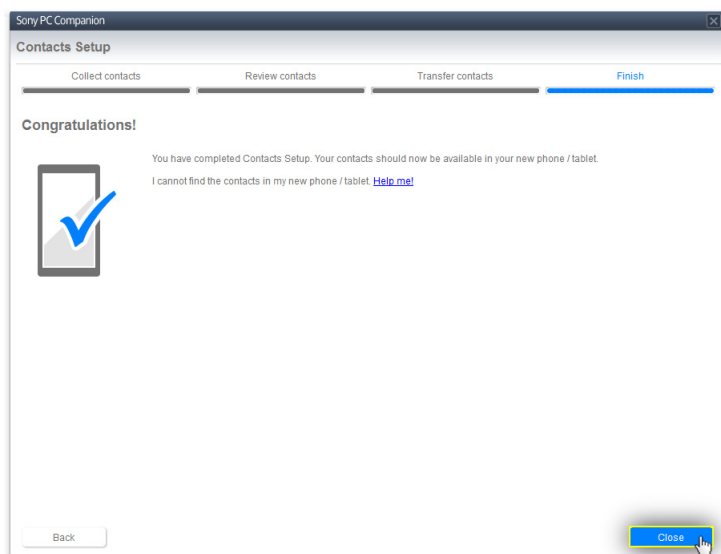
17. Select **Next**.



18. Select **Next**.




19. Select **Close**.



On new Xperia™ device:

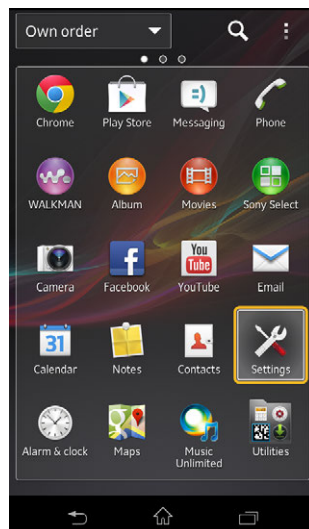
If you have already set up your existing Google account on your new Xperia device, go straight to step 27 below. If you do not have your Google account set up on your new Xperia device, continue on directly from here.

The procedure for setting up a Google account for synchronisation might vary depending on the model of the Xperia™ device. See the manual for the new device for more specific information on how this is done on your phone.

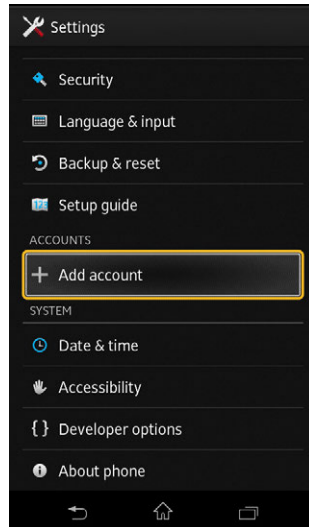
20. From the home screen, tap .



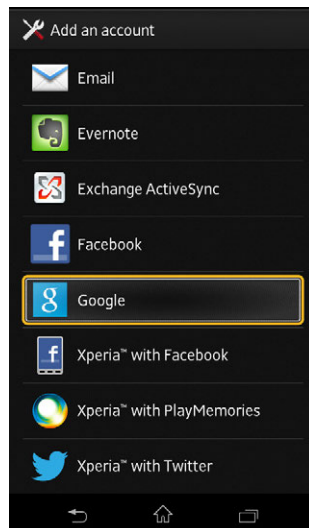
21. Tap **Settings**.



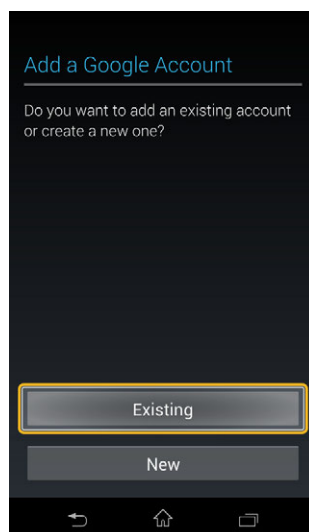
22. Tap **Add account**.



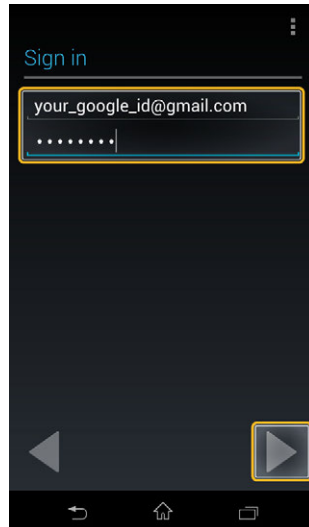
23. Tap **Google**.



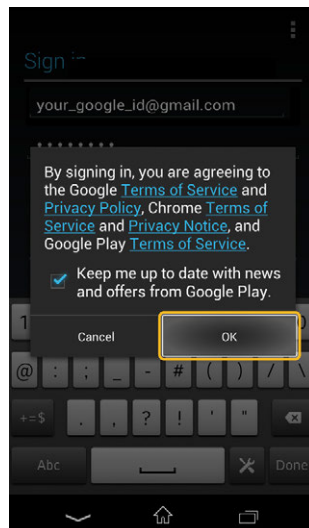
24. Tap **Existing**.



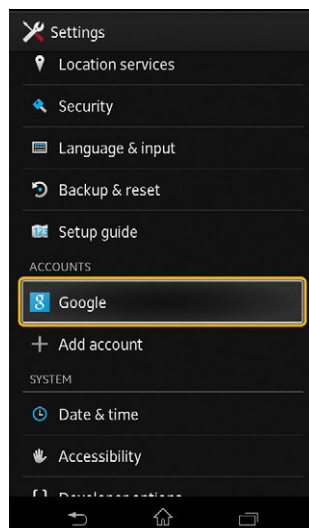
25. Sign in using the Google account you used on your old phone.



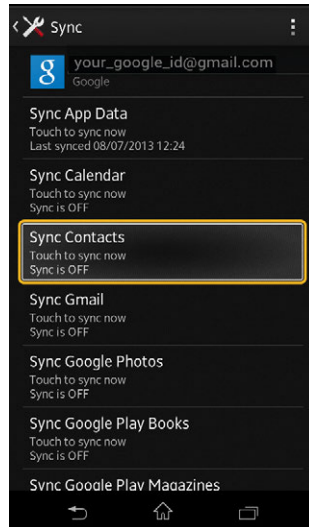
26. Tap **OK** to accept terms of service for the Google account.



27. Under **Settings > Accounts**, tap **Google**



28. Tap **Sync Contacts**.



All your Google contacts, including those that you synced from your old phone, are now available in the **Contacts** application on your Xperia™ device.



Did this guide help you?
Please give us feedback

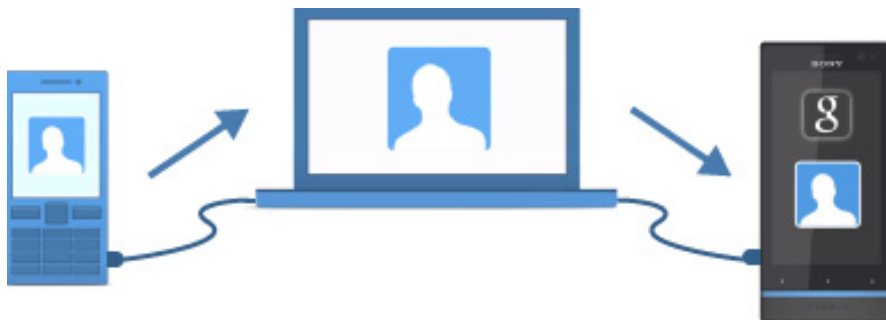


Did this guide help you?
Please give us feedback

Transferring contacts using PC Companion without using a Google account

This guide shows you how to transfer contacts in your old phone without Android to your new Xperia™ device using PC Companion without using a Google account. However, we recommend you to use a Google account for your contacts. See [“Why use a Google account?”](#) on page 2 for more information.

How it works



PC Companion is a PC program that helps you upload the contacts in your old mobile phone to your new Xperia™ device. Below is a general overview of the process when not using a Google account:

1. Copy all your contacts on the old phone to your memory card.
2. Copy the contacts to your new Xperia™ device using the PC Companion application.
3. Import the contacts on your new device.

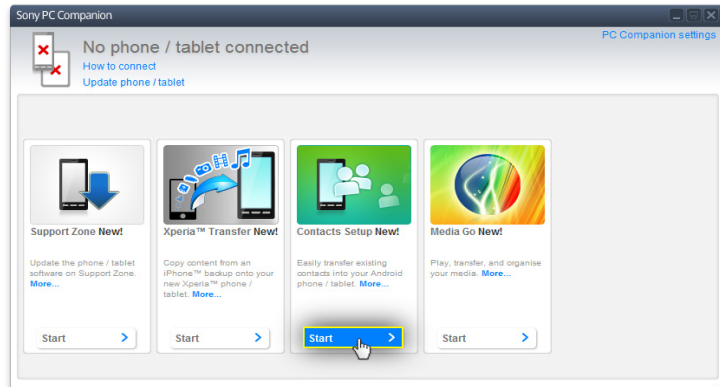
What you need

You need the following to transfer your contacts to your new Xperia™ device using PC Companion and a Google account:

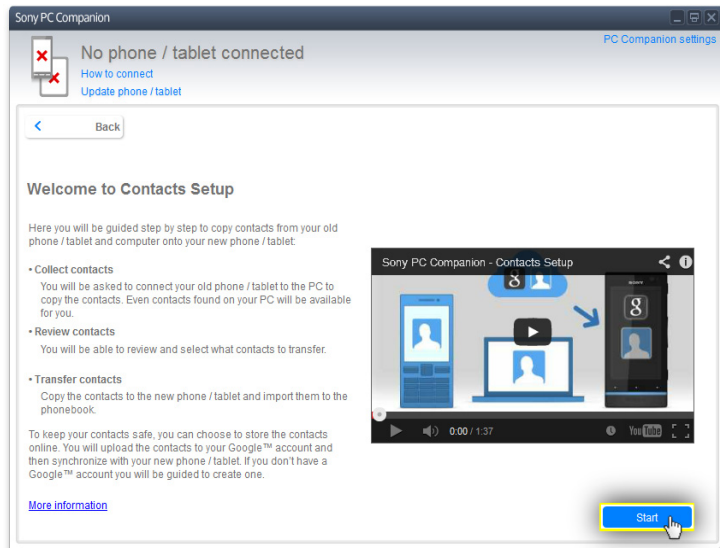
- A PC with PC Companion installed -see <http://www.sonymobile.com/global-en/tools/pc-companion>
- An USB cable for your old phone

How to do it

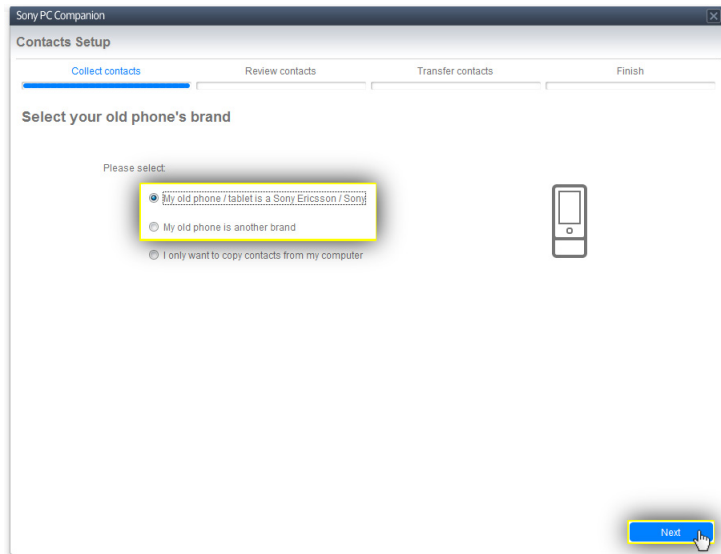
1. Connect your old phone to the computer.
2. **Computer:** Start PC Companion application. If this is your first time starting the application, select **Skip** on the first screen.
3. Select **Contact Setup** > **Start**.



4. Select **Start**.

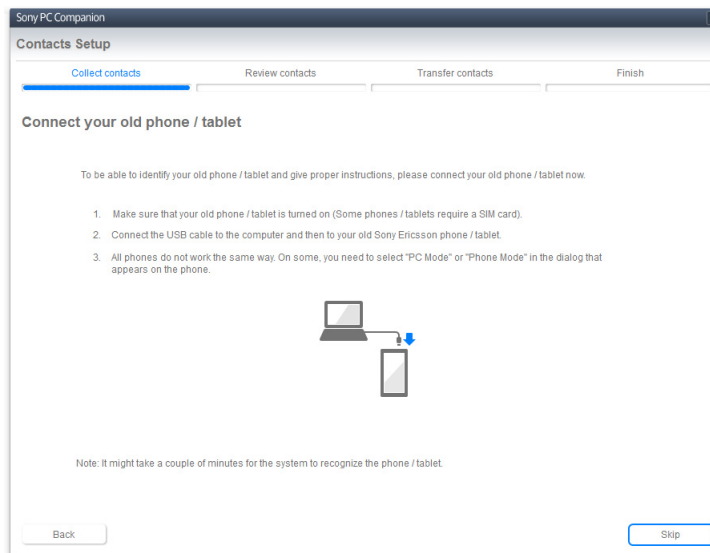


5. Select the brand of the old phone.
6. Select **Next**.



7. **For Sony Ericsson/Sony phones:**

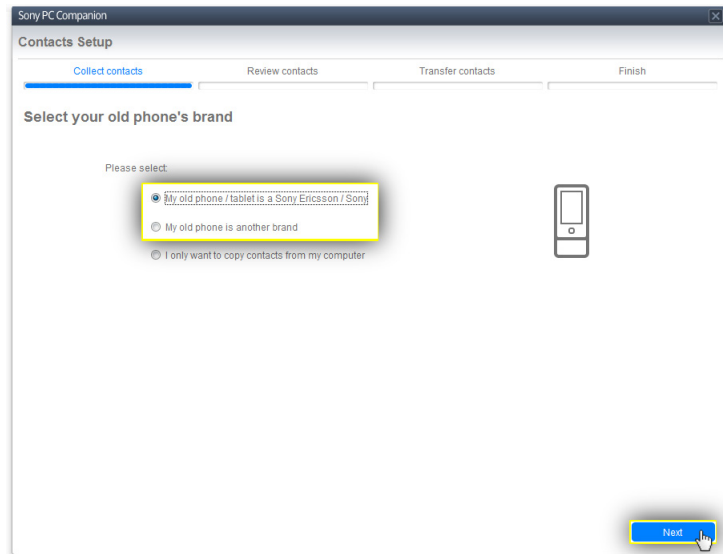
Connect your old phone to the computer then follow the instructions on the screen



7 For other phones:

This step varies depending on phone type. Refer to the manual for the phone for more details. Below are general instructions on how to save contacts to a memory card:

- a) Disconnect the old phone from the computer.
- b) **Old phone:** Open the **Phone book** application. This may also be called **Contacts**, **Address book**, **People** or something similar.
- c) Select all contacts.
- d) Select the relevant menu option to export the contacts to the memory card.
- e) Connect the old phone to the computer.
- f) **Computer:** Select **Next** in the PC Companion application.

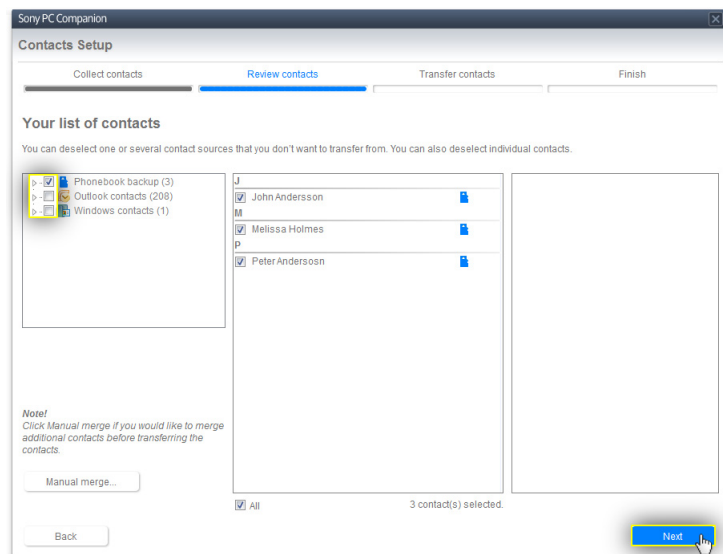


All phones:

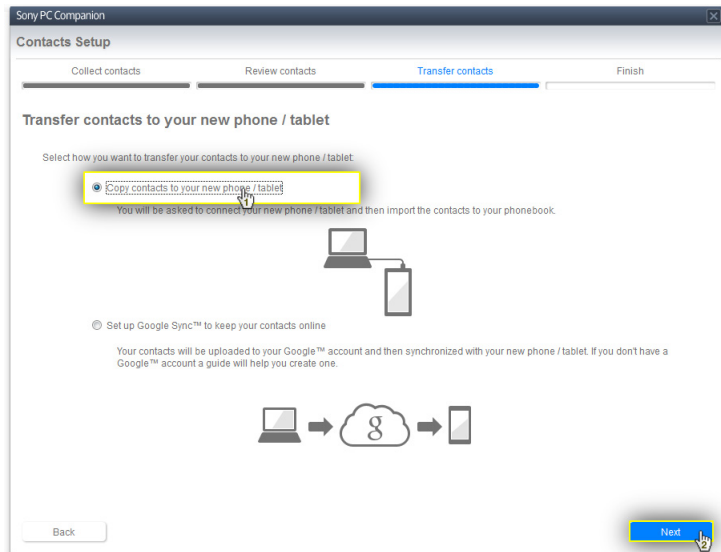
A list appears on the left hand side showing all contacts saved on the old phone and the computer.

8. Check **Phone contacts** in the left window.
9. Uncheck all other groups of contacts (if any).
10. Select **Next** to import all contacts.

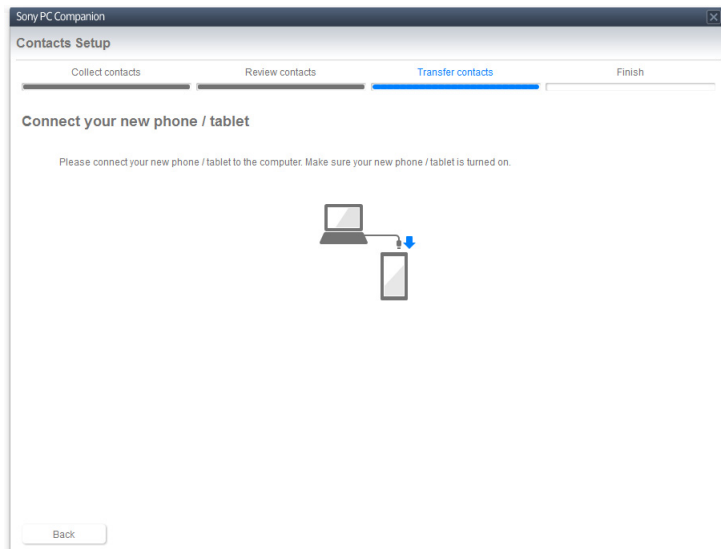
Tip: You can uncheck any contact in the list on the middle window to skip transferring it to your Xperia™ device.



11. Select **Copy contacts to new phone / tablet.**
12. Select **Next.**



13. Connect your new Xperia™ device to the computer.



Note! The steps for importing contacts from a memory card might vary depending on the model of the Xperia™ device. See the manual for the new device for more specific information.

14. Disconnect your new Xperia™ device from the computer.

15. **New Xperia™ device:** Open the **Phonebook** application. This may also be called **Contacts**, **Address book**, **People** or something similar.

16. Press the **Menu** key.

17. Select (depending on what is available):

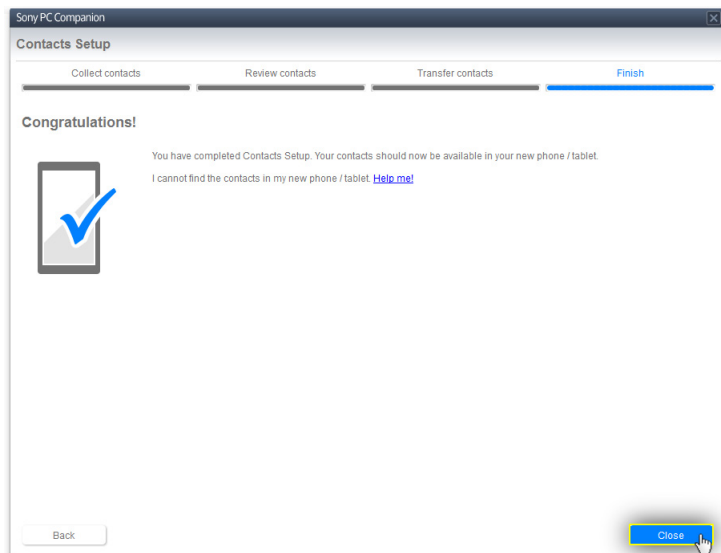
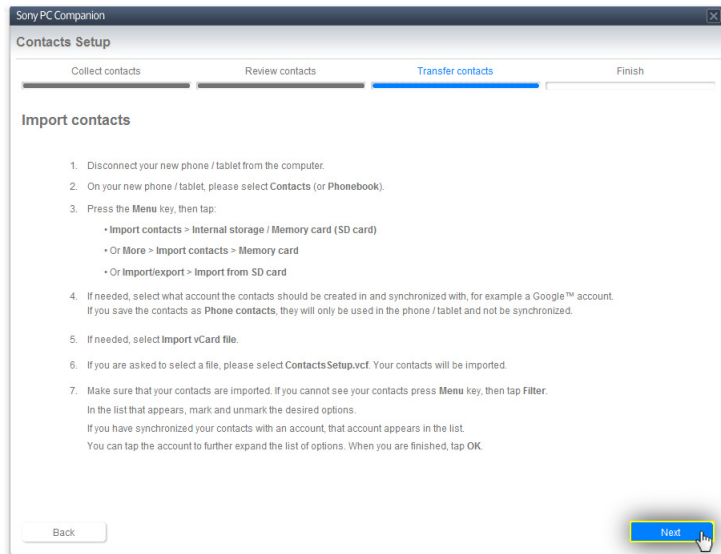
- **Import contacts > Internal Storage/Memory Card (SD card)**
- **More > Import contacts > Memory card**
- **Import/Export > Import from SD card**

18. If prompted, select **Import vCard file > ContactsSetup.vcf**.

19. If prompted, select the phone memory as the destination.

20. **Computer:** Select **Next**.

21. Select **Close**.



Your contacts will now be available in the **Contacts** application on your new Xperia™ device.



Did this guide help you?
Please give us feedback



Did this guide help you?
Please give us feedback